

**1 fl oz / 30 mL Tincture Bottle Label  
(1.75" X 4")**

CBD:CBN Hybrid Tincture

**ARTWORK RESOLUTION:** 300ppi

**RECOMMENDED FILE FORMAT:** Adobe Illustrator .AI or Press-Ready PDF

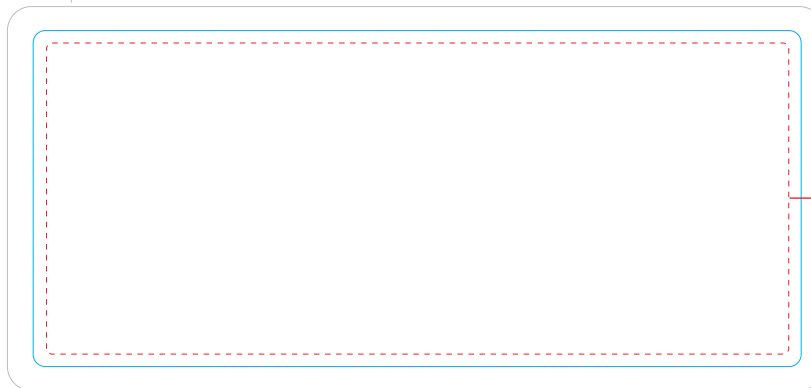
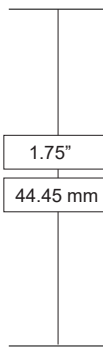
Prints CMYK + **Gloss** (or **Matte**) Lamination  
White BOPP Material  
Permanent Adhesive (Tight Mandrel)  
Deliver on 3" Core Roles  
Unwind Direction: #3, Right side out first  
1,000 labels per roll maximum



**CMYK DIGITAL OFFSET PRINTING**

**FONTS MUST BE CONVERTED TO OUTLINES IN FINAL ARTWORK FILE**

1/8" BLEED ARTWORK DIMENSIONS: 4.25" x 2" (101.6 X 44.45 mm)



**KEEP IMPORTANT ELEMENTS INSIDE SAFE ZONE**



**CARRIER OILS**  
(Adjust for your choice)

*Organic Hemp Seed Oil*

- OR -

*Coconut Oil (MCT)*

Exclude "Natural Flavors" in **Other Ingredients** if your tincture is unflavored.

**SUGGESTED USE**

Shake gently before each use. Place drops (1 full dropper) under the tongue. Allow to absorb for 60 seconds and then swallow. Use once daily or as recommended by your healthcare provider.

Talk to your doctor before use if you are pregnant, nursing, or are taking any prescribed medications.

Keep out of reach of children. Store in a cool location, away from direct sunlight.



YOUR BRAND

**CBD + CBN**

**1500 mg**

FLAVOR NAME

**1 FL OZ (30 mL)**

**Product Facts**

Serving Size 1 mL (or 1 dropper)  
Servings Per Container 30

Amount Per Serving	% Daily Value
Cannabidiol (CBD) Hemp Extract 33 mg †	
Cannabinol (CBN) Hemp Extract 17 mg †	

† Daily Value not established.

**Other Ingredients:** Organic Hemp Seed Oil, Natural Flavors

Made in USA for Company Name, Address, City, State, ZIP domain.com



[ Contains 0% THC ]

**AMOUNT PER SERVING**  
(Adjust for different potency)

**300 mg = 7 mg CBD / serving  
3 mg CBN / serving**

**750 mg = 16 mg CBD / serving  
8 mg CBN / serving**

**1500 mg = 33 mg CBD / serving  
17 mg CBN / serving**

**OTHERS:** Divide total cannabinoids amount per bottle by 30 and round to nearest even mg amount.

**RECOMMENDED PRINTING VENDOR:**

Lightning Labels, Inc  
Contact: Kim Kelly  
Email: kim.kelly@lightninglabels.com  
Tel: 720.520.3746  
www.lightninglabels.com

**SHIP-TO LOCATION:**

Covalent CC, LLC  
Attn: Private Label Receiving  
955 Grier Drive, Suite B  
Las Vegas, NV 89119  
(702) 766-4367

Private Label FAQs:



**Have Questions?** Contact [design@covalentcbd.com](mailto:design@covalentcbd.com)